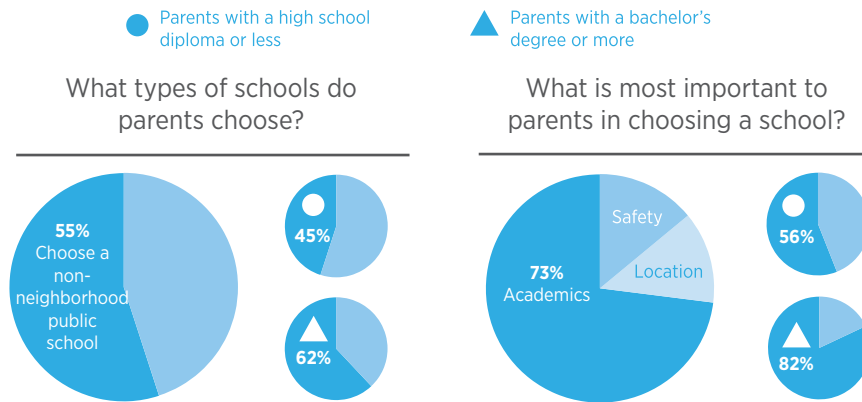


BALTIMORE

What is it like for parents to choose a public school in cities that provide multiple options? According to a survey of 4,000 public school parents in eight “high-choice” cities, including Baltimore, parents’ experiences vary widely. More than half of Baltimore families reported that they have another good public school option available to them besides their current school. But only 32% reported that the city’s schools are getting better, compared to 65% of parents in nearby D.C. Parents with a high school diploma or less in Baltimore were far less likely to choose a non-neighborhood-based public school for their child compared to parents with a bachelor’s degree or more, a gap that was among the largest observed across the eight cities surveyed. Along with New Orleans and Philadelphia, Baltimore families also reported the lowest levels of trust and confidence in the school system to provide all neighborhoods with great public schools. For the full report comparing all eight cities, visit crpe.org.

HOW PARENTS CHOOSE A SCHOOL

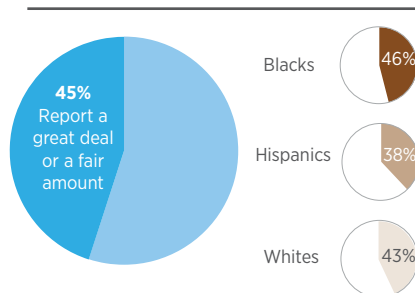


HOW PARENTS PERCEIVE THEIR OPTIONS

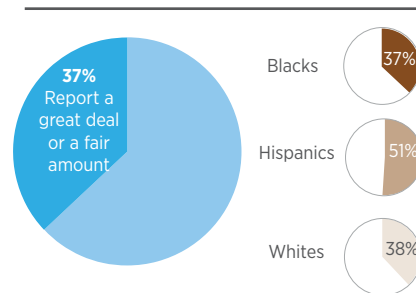


PARENTS' TRUST AND CONFIDENCE IN CITY LEADERS

How much trust and confidence do parents have in the school system to make sure all neighborhoods have great schools?



How much trust and confidence do parents have in city leaders to address public problems?



BALTIMORE

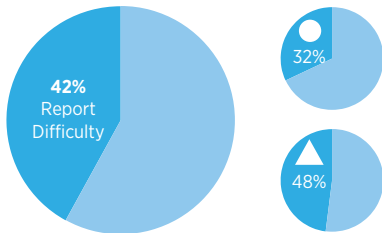
COMMON BARRIERS TO CHOOSING A SCHOOL

● Parents with a high school diploma or less

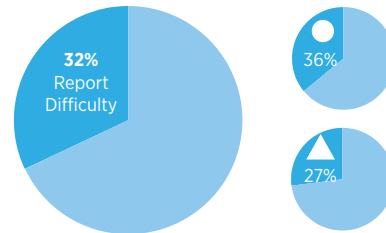
▲ Parents with a bachelor's degree or more



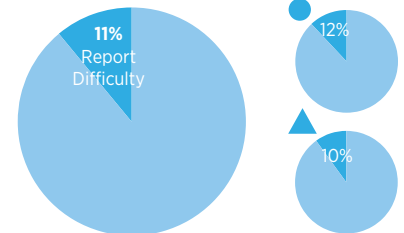
Available schools weren't a good fit



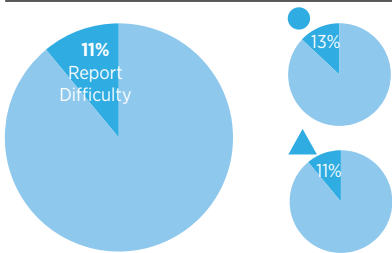
Understanding which schools their child was eligible to attend



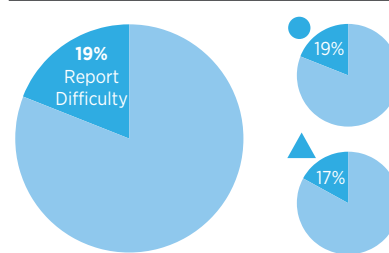
Difficult or confusing paperwork



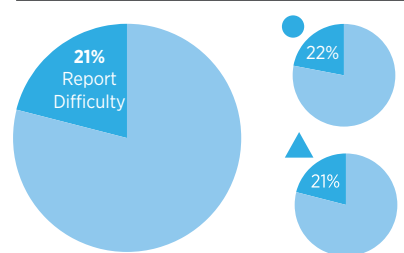
Number of applications



Different application deadlines



Finding transportation for their child to and from school



HOW PARENTS BECOME INFORMED ABOUT THEIR OPTIONS

Parents use on average

3 information sources



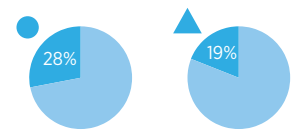
52%

of parents say **visiting the school** is the most useful information source



25%

Unable to get information needed to choose



HOW PARENTS GET THEIR CHILD TO SCHOOL

47%



of parents report driving their child to and from school

TRIP TIME (EACH WAY) FOR CHILDREN IN NON-NEIGHBORHOOD PUBLIC SCHOOLS

00:14:49

Children in non-neighborhood public schools traveled longer (8 minutes longer than those in neighborhood public schools).