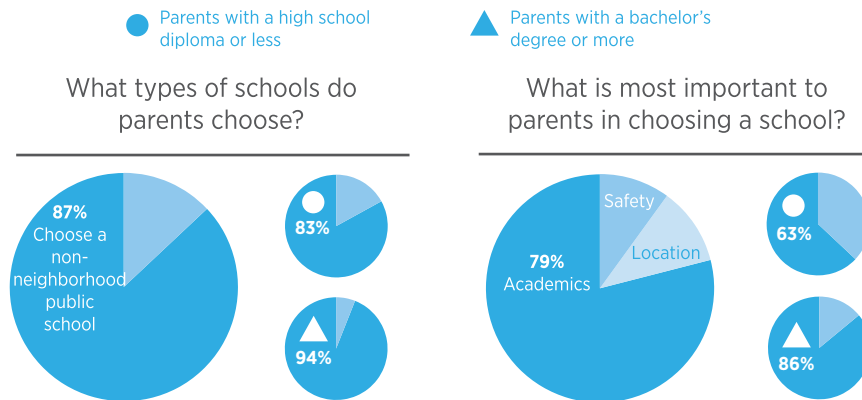


NEW ORLEANS

What is it like for parents to choose a public school in cities that provide multiple options? According to a survey of 4,000 public school parents in eight “high-choice” cities, including New Orleans, parents’ experiences vary widely. New Orleans parents were among the most likely to report that their city’s schools were getting better. Black and Hispanic parents, however, were significantly less optimistic in their outlook compared to white parents. Yet, more parents in New Orleans reported struggling to find a school that provided a good fit for their child than in most other cities surveyed. However, compared to most other cities, fewer parents in New Orleans reported transportation as a barrier to choosing a school. For the full report comparing all eight cities, visit crpe.org.

HOW PARENTS CHOOSE A SCHOOL

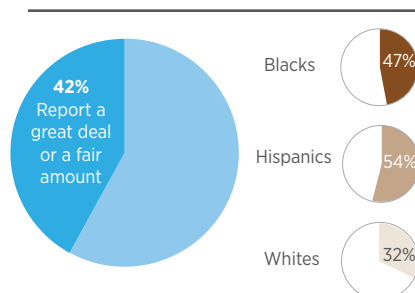


HOW PARENTS PERCEIVE THEIR OPTIONS

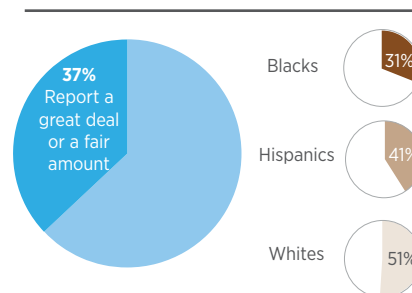


PARENTS' TRUST AND CONFIDENCE IN CITY LEADERS

How much trust and confidence do parents have in the school system to make sure all neighborhoods have great schools?



How much trust and confidence do parents have in city leaders to address public problems?



NEW ORLEANS

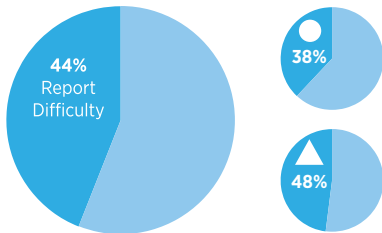
COMMON BARRIERS TO CHOOSING A SCHOOL

● Parents with a high school diploma or less

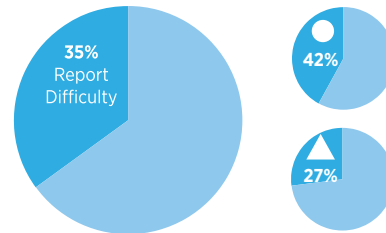
▲ Parents with a bachelor's degree or more



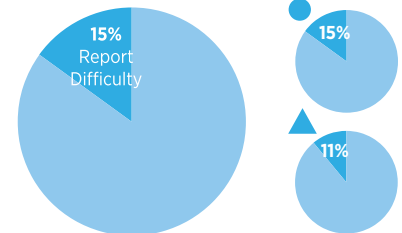
Available schools weren't a good fit



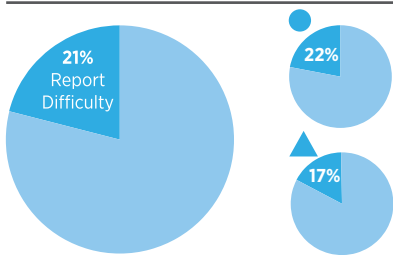
Understanding which schools their child was eligible to attend



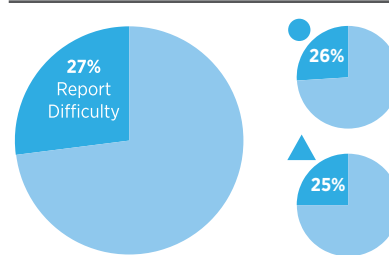
Difficult or confusing paperwork



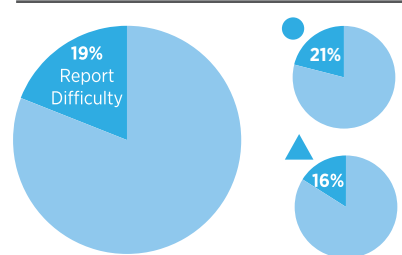
Number of applications



Different application deadlines



Finding transportation for their child to and from school



HOW PARENTS BECOME INFORMED ABOUT THEIR OPTIONS

Parents use on average

2 information sources



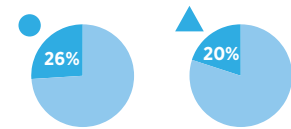
50%

of parents say **visiting the school** is the most useful information source



23%

Unable to get information needed to choose



HOW PARENTS GET THEIR CHILD TO SCHOOL

55%



of parents report driving their child to and from school

TRIP TIME (EACH WAY) FOR CHILDREN IN NON-NEIGHBORHOOD PUBLIC SCHOOLS

00:18:00

Children in non-neighborhood public schools traveled longer (4 minutes longer than those in neighborhood public schools).